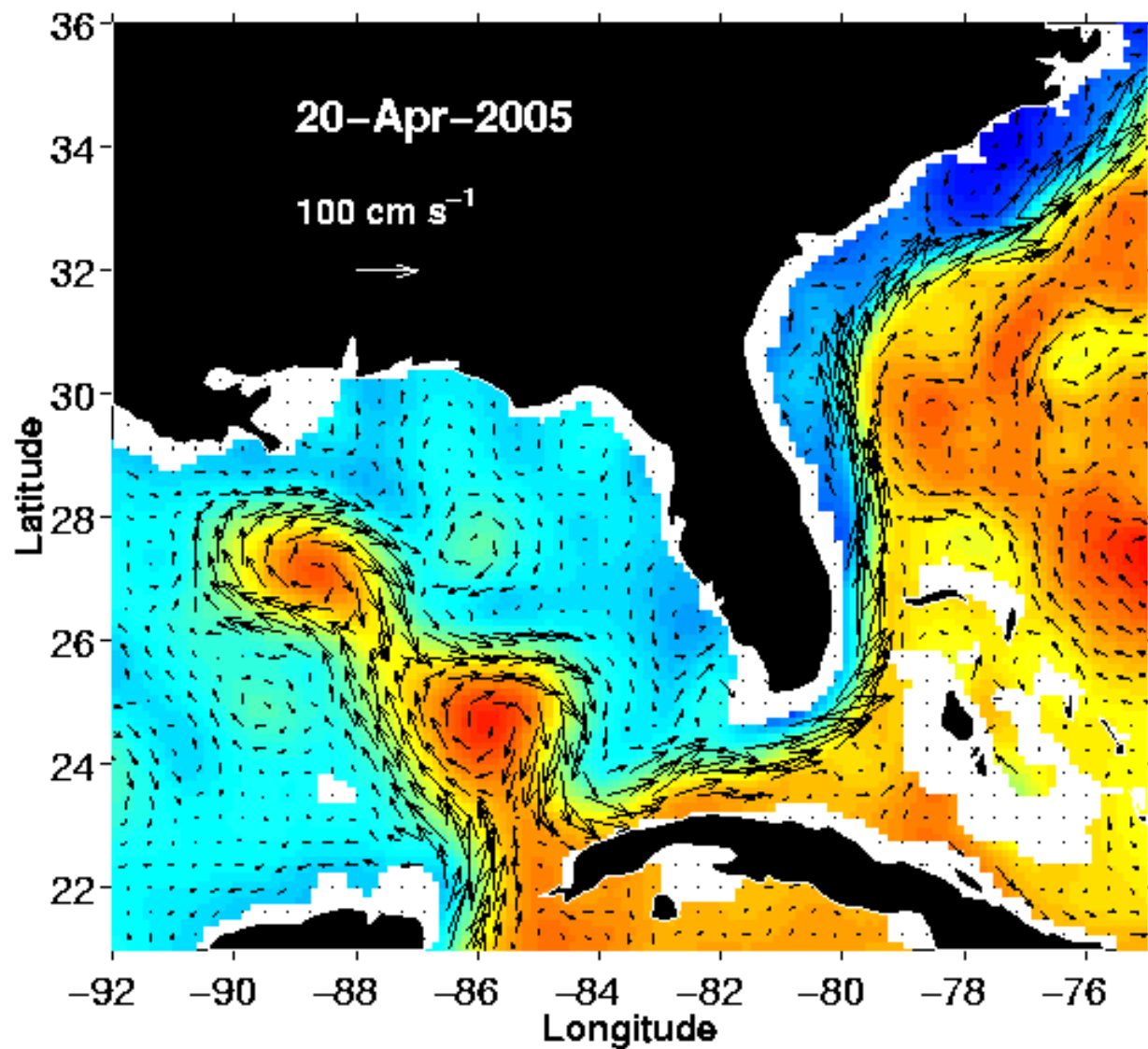
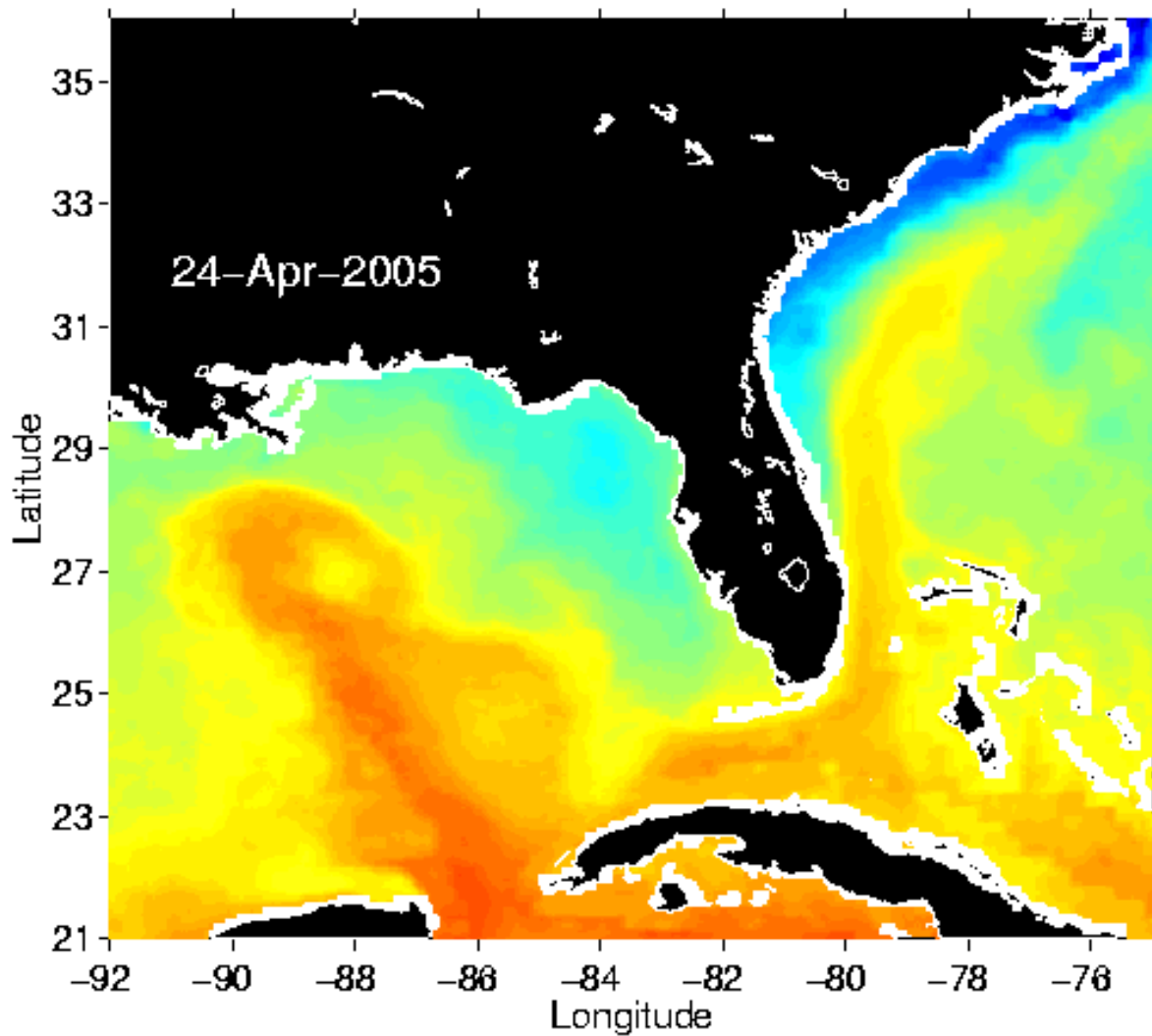


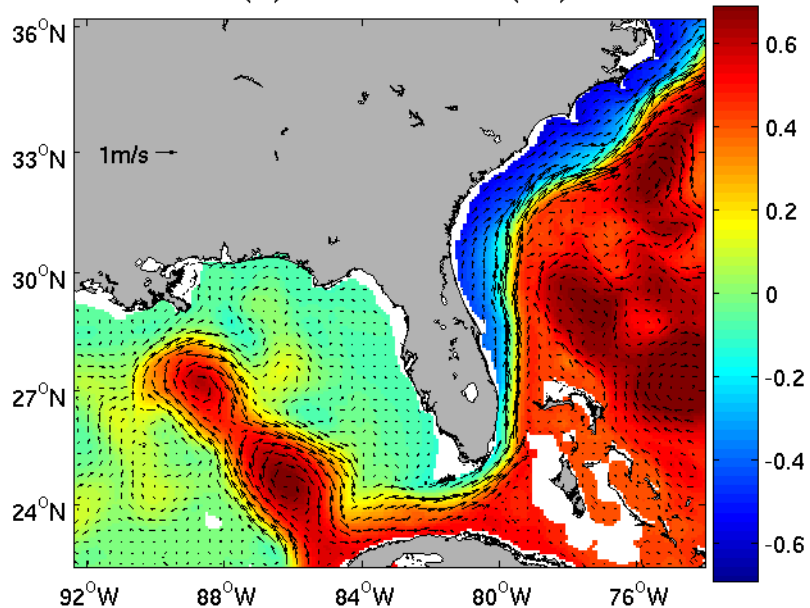
COMPS/SEACOOSS data products: SSH and Geostrophic Currents



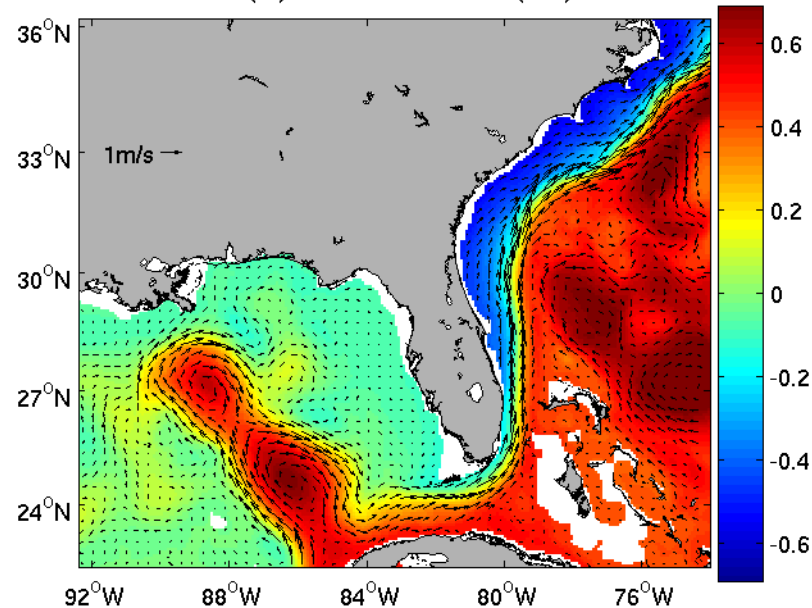
COMPS/SEACOOS data products: daily cloud-free OI-SST



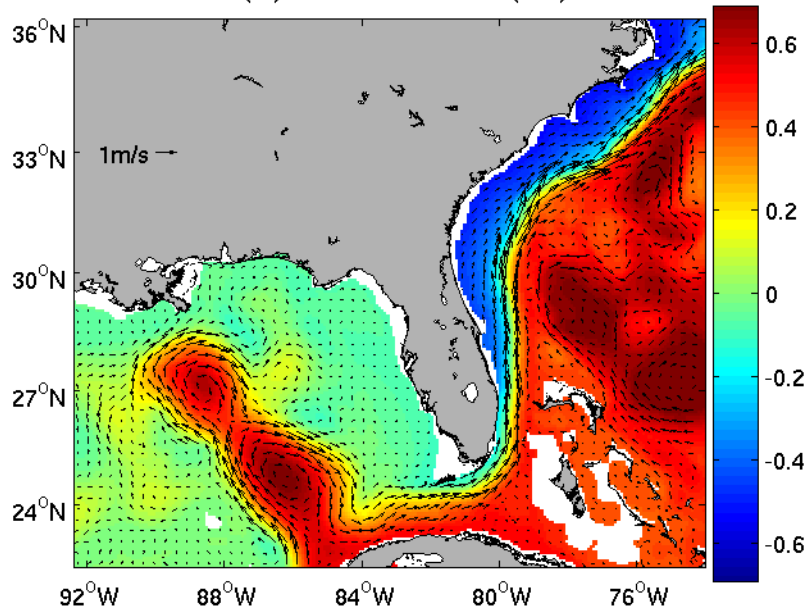
HYCOM SSH (m) and surface currents (m/s) 04/28/2005



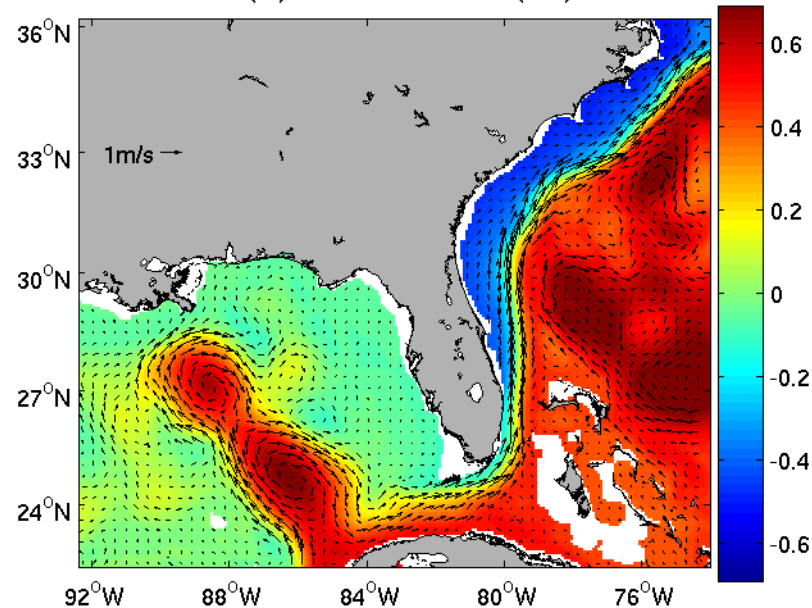
HYCOM SSH (m) and surface currents (m/s) 04/29/2005



HYCOM SSH (m) and surface currents (m/s) 04/30/2005



HYCOM SSH (m) and surface currents (m/s) 05/01/2005



Suggested waypoints to Isla Mujeres based on the currents shown in slide 1 (and 3)

- 1) Tampa Bay to about $25^{\circ} 20' N$, $84^{\circ} 20' W$, where the LC may be encountered.
- 2) C/C and head for the tip of Cuba at about $21^{\circ} 50' N$, $85^{\circ} 00' W$ with the assist of the LC.
- 3) C/C to Finish, making note that you will be set toward the north by the LC once you begin crossing it again.

These are just suggestions; no claim is made to their validity. Have a safe, enjoyable cruise